

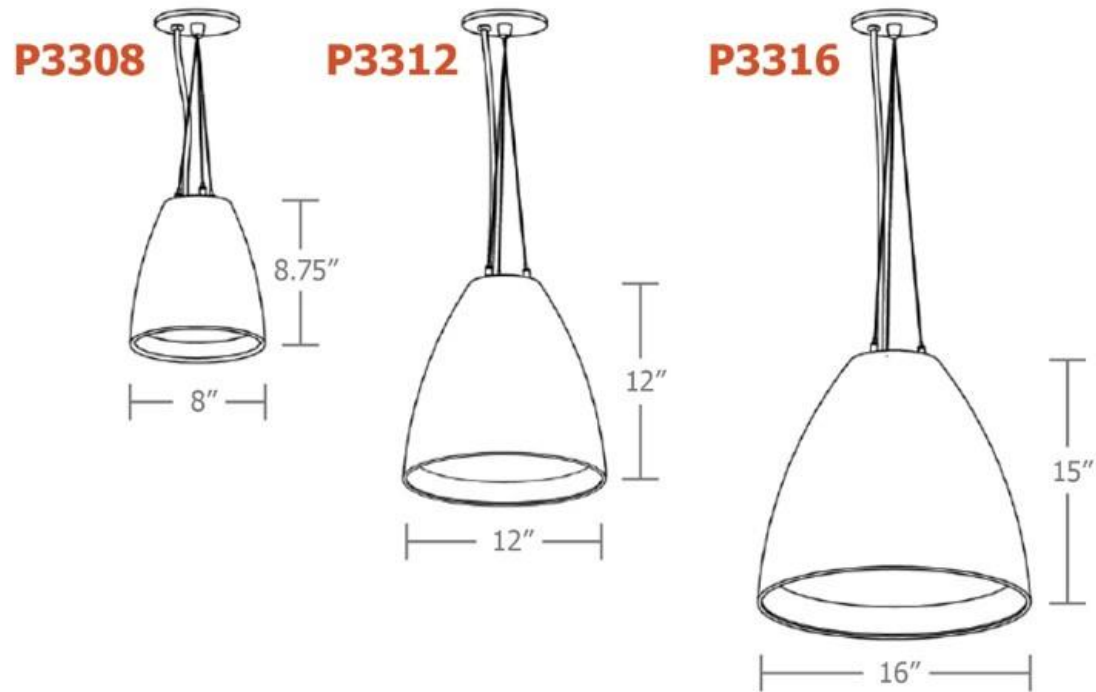


bul.it™ 5-slider

your lighting rep has
recommended the **bul.it™**
pendant for your project
Let's take a quick look:



sizes and lumens



- P3308 (8") / 995 – 2780 lm
- P3312 (12") / 960 – 3065 lm
- P3316 (16") / 1600 – 3885 lm



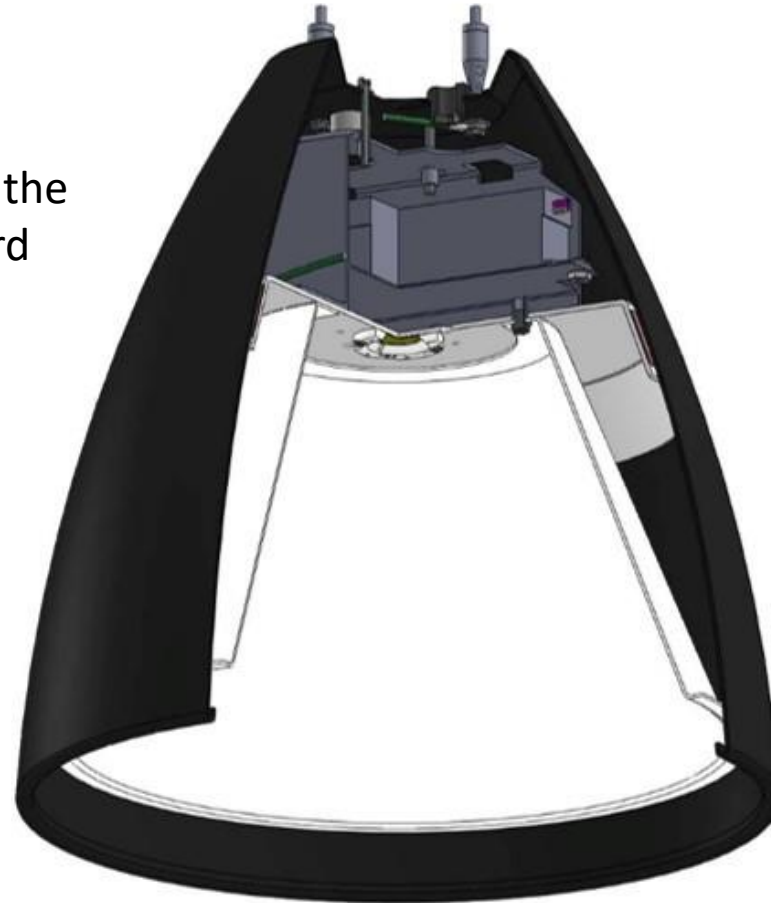
construction

integral programmable driver, universal input (120-277v), field maintainable, 0-10v controllable to 1% dimming.

(POC) power over cable suspension system option provides a clean look without the need for a separate power cord

single COB LED module in 2700K, 3000K, 3500K, 4000K, **90+ CRI** standard

.050" spun aluminum conical reflector finished in high reflectance (>92%) matte white powder coat



5" dia. spun steel canopy with field adjustable tripod stainless steel cables

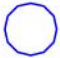
optional colored cloth power cord in blue, orange, purple, red or white & gray dot

precision CNC spun .063" aluminum parabolic housing with rolled bottom edge for added strength

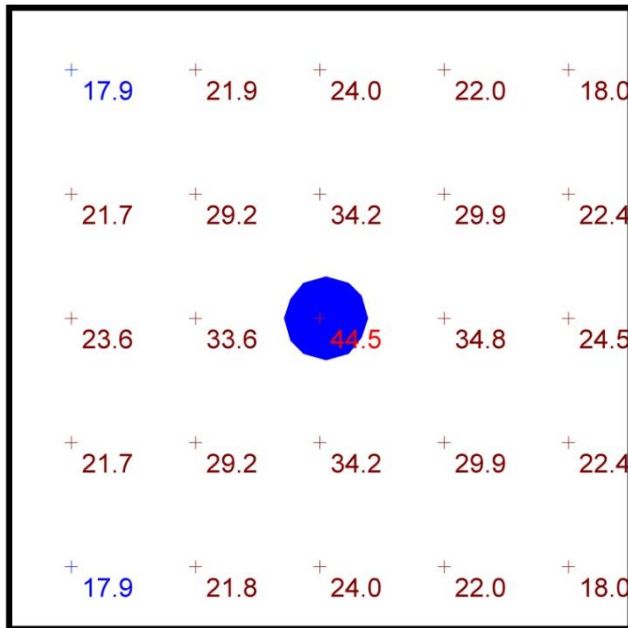
15 standard powder coat paint finishes + custom RAL colors

open bottom, frosted acrylic flat lens, or open with decorative colored ring in amber, blue, frost, green, red, or yellow

performance

Schedule						
Symbol	QTY	Manufacturer	Catalog Number	Description	Lamp	Wattage
	1	Impact Architectural Lighting	P3316 40 HX	16" dia. pendant bul.it luminaire w/ open bottom	4000k 90cri LED	45

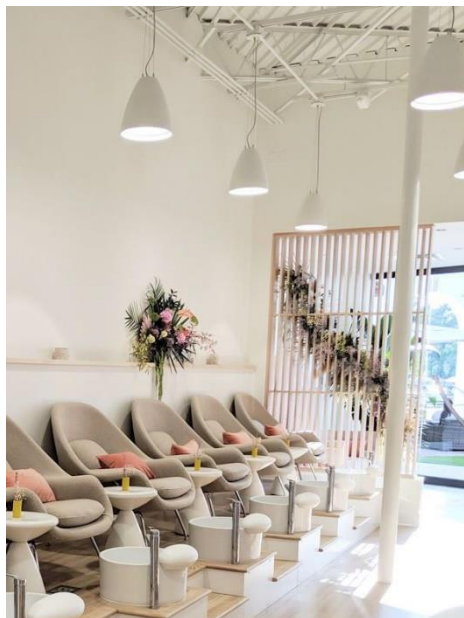
Statistics						
Description	Symbol	Avg	Max	Min	Max/Min	Avg/Min
bul.it		25.7 fc	44.5 fc	17.9 fc	2.5:1	1.4:1



Plan View
Scale - 1" = 2ft

- 10' x 10' x 14'H space
- 80/50/20 reflectances
- bottom of fixture at 12' aff
- FC readings at 2.5' aff
- layout conducted using P3116 HX output 90+ cri (3885 delivered lumens)





www.impactltg.com

- spec sheet and color chart
- photometric files and BIM models
- built to order in Saint Louis, MO, USA
- 4-week lead time

bul.it™ 5-slider

